

Netherhall School

LEARNING ROADMAP

DEPARTMENT

Cambridge Technicals in PE (Y12)

Ongoing assessment based on:



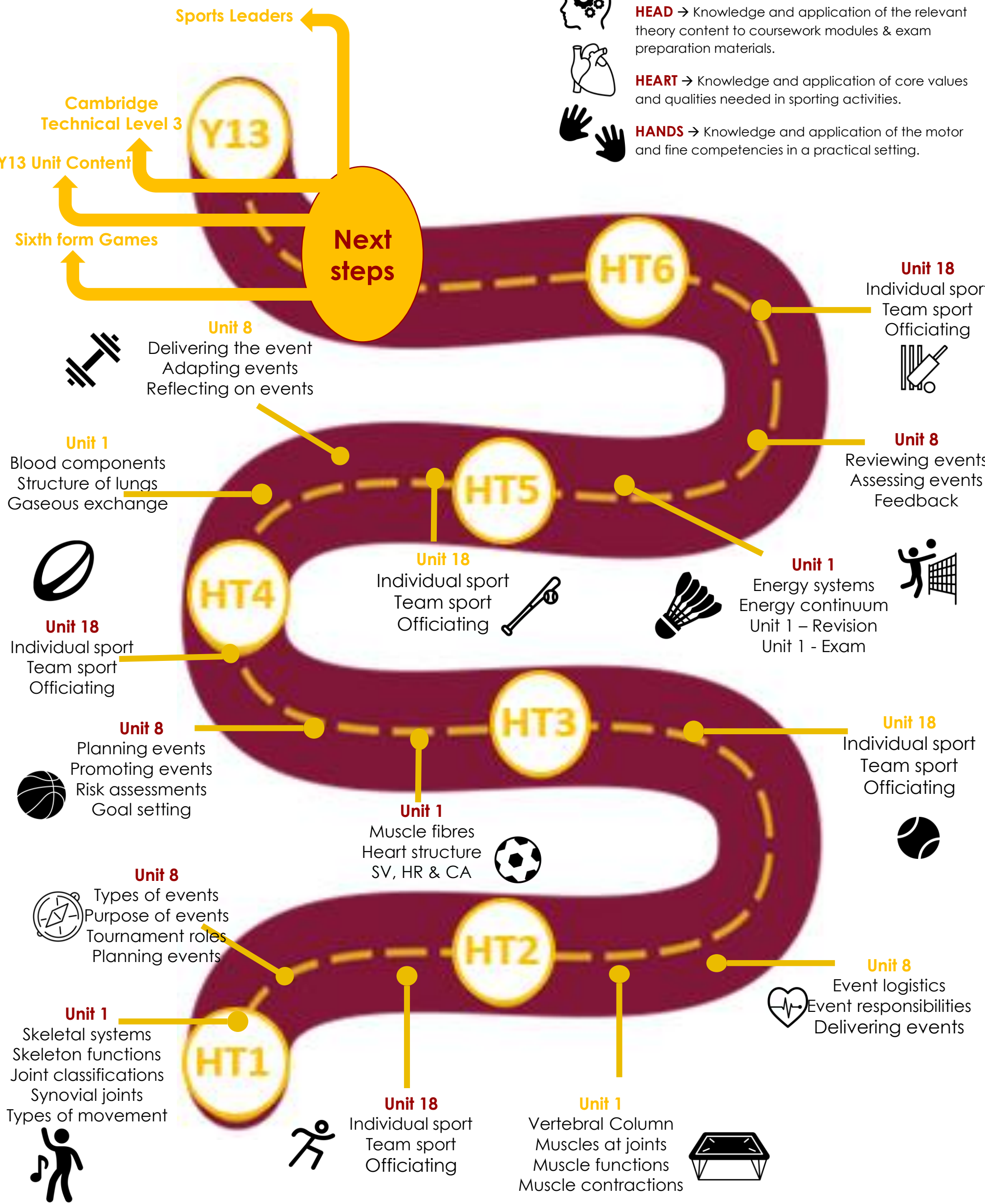
HEAD → Knowledge and application of the relevant theory content to coursework modules & exam preparation materials.



HEART → Knowledge and application of core values and qualities needed in sporting activities.



HANDS → Knowledge and application of the motor and fine competencies in a practical setting.



Netherhall School

LEARNING ROADMAP

DEPARTMENT

Cambridge Technicals in PE (Y13)

Ongoing assessment based on:



HEAD → Knowledge and application of theory content provided in both coursework and exam units.



HEART → Knowledge and application of core values and qualities needed during sports participation.



HANDS → Knowledge and application of the motor and fine competencies in practical sports.

